



Highfield Gill Lane, Darley Dale, Derbyshire, DE4 2HH

Saxton Mee

Highfield Gill Lane

Darley Dale

Guide Price

£500,000

Guide Price £500,000 - £525,000.

This beautifully refurbished three double bedroom detached bungalow enjoys a peaceful and picturesque setting with far-reaching views over the surrounding Derbyshire countryside. Situated on Darley Hillside, the property is perfectly positioned between the popular towns of Bakewell and Matlock. The property benefits from a wide range of local amenities within walking distance, including shops and cafes and, as well as direct access to scenic local walks and a wealth of outdoor pursuits. Junior schools are close by and secondary schools are available in Matlock and Bakewell. Darley Hillside is a vibrant and welcoming community, well-loved for its mix of natural beauty and accessibility to the wider Peak District.

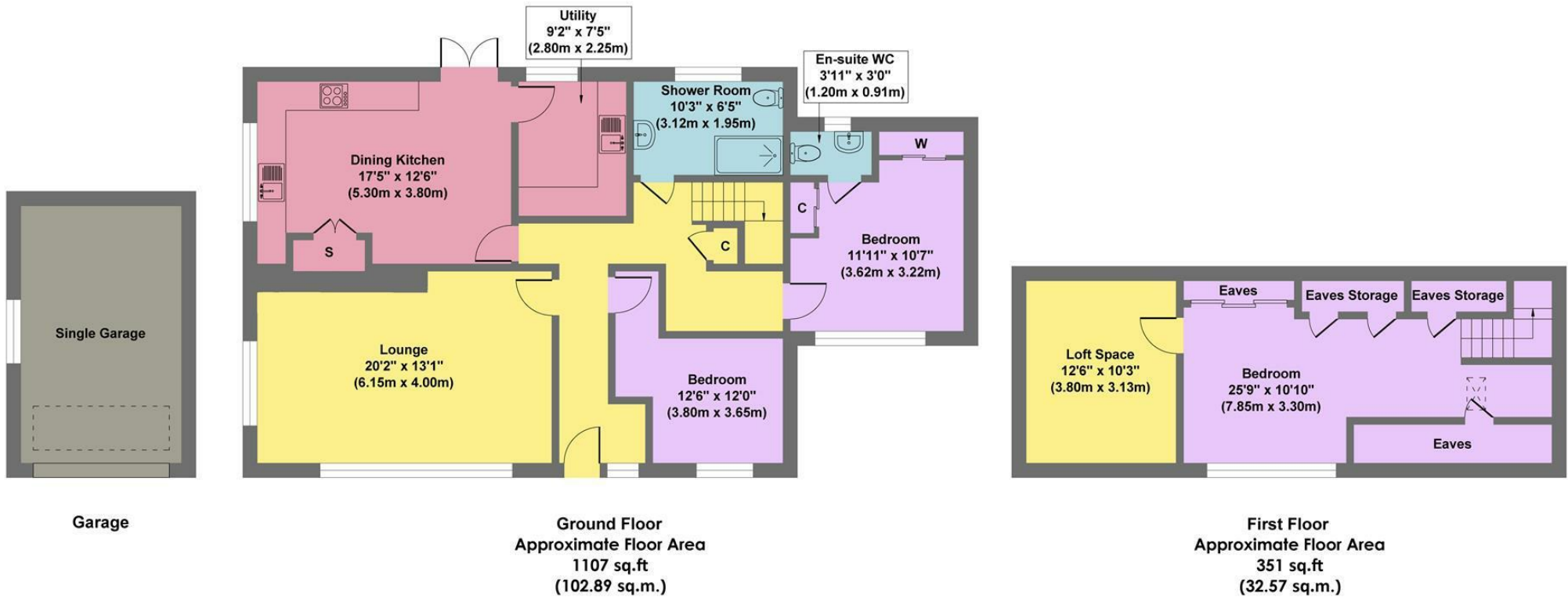
The current owners have skilfully renovated the property to create spacious, light-filled accommodation finished to a high standard with attention to detail throughout. Changes since their purchase include a dormer conversion, a new fitted kitchen in an extended kitchen/diner, a re-fitted bathroom, a full scope decoration, installation of triple glazing and extensive work in the gardens.

- Peaceful & Picturesque Setting
- Fully Renovated To A High Standard
- Spacious & Well Proportioned
- Beautiful Landscaped Grounds
- Detached Garage & Off Road Parking
- Superb Far Reaching Views
- Close To Excellent Amenities
- EPC: D
- Viewing Bakewell Office





Highfield



Approx. Gross Internal Floor Area 1458 sq.ft / 135.46 sq.m(Excluding Garage)

Illustration for identification purposes only. Measurements are approximate, not to scale

While we endeavour to make our sales particulars fair, accurate and reliable, they are only a general guide to the property and, accordingly, if there is any point, which is of particular importance to you, please contact the relevant office. The Agents have not tested any apparatus, equipment, fittings or services and so cannot verify they are in working order. The buyer is advised to obtain verification. Please note all the measurement details are approximate and should not be relied upon as exact. All plans, floor plans and maps are for guidance purposes only and are not to scale. Under no circumstances should they be relied upon as exact or for use in planning carpets and other such fixtures, fittings or furnishings. YOUR HOME IS AT RISK IF YOU DO NOT KEEP UP REPAYMENTS ON A MORTGAGE OR OTHER LOAN SECURED ON IT. 'A Life Assurance policy may be requested.' 'Written Quotations of credit terms available on request.'

Banner Cross
T: 0114 268 3241
E: bannercross@saxtonmee.co.uk
www.saxtonmee.co.uk

Hathersage
T: 01433 650009
E: hathersage@saxtonmee.co.uk

Bakewell
T: 01629 815307
E: bakewell@saxtonmee.co.uk

Matlock
T: 01629 828250
E: matlock@saxtonmee.co.uk

